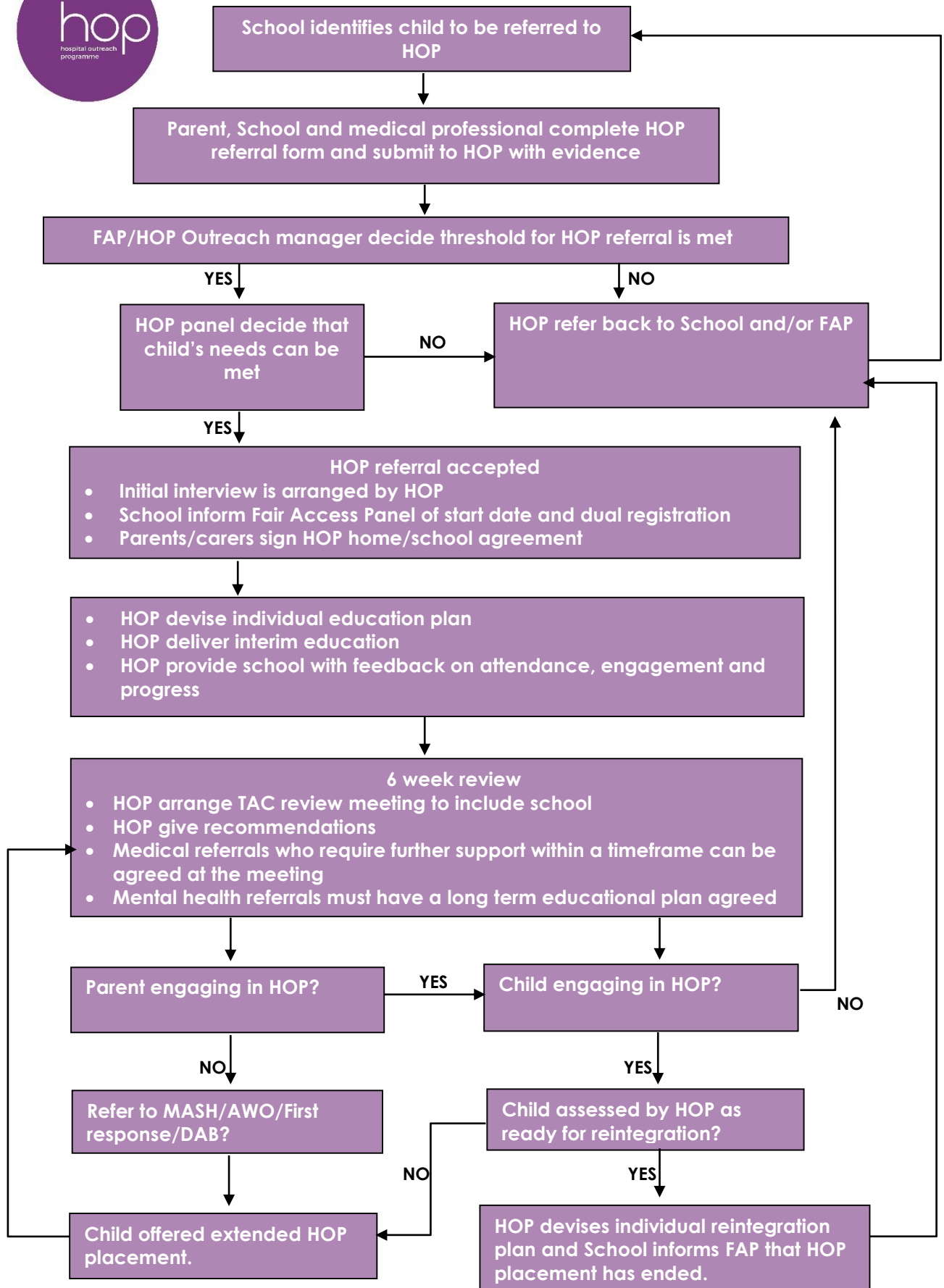




HOP Referral process



School identifies child to be referred to HOP

Parent, School and medical professional complete HOP referral form and submit to HOP with evidence

FAP/HOP Outreach manager decide threshold for HOP referral is met

HOP panel decide that child's needs can be met

HOP refer back to School and/or FAP

HOP referral accepted

- Initial interview is arranged by HOP
- School inform Fair Access Panel of start date and dual registration
- Parents/carers sign HOP home/school agreement

- HOP devise individual education plan
- HOP deliver interim education
- HOP provide school with feedback on attendance, engagement and progress

6 week review

- HOP arrange TAC review meeting to include school
- HOP give recommendations
- Medical referrals who require further support within a timeframe can be agreed at the meeting
- Mental health referrals must have a long term educational plan agreed

Parent engaging in HOP?

Child engaging in HOP?

Refer to MASH/AWO/First response/DAB?

Child assessed by HOP as ready for reintegration?

Child offered extended HOP placement.

HOP devises individual reintegration plan and School informs FAP that HOP placement has ended.



HOP SEN Referral process

